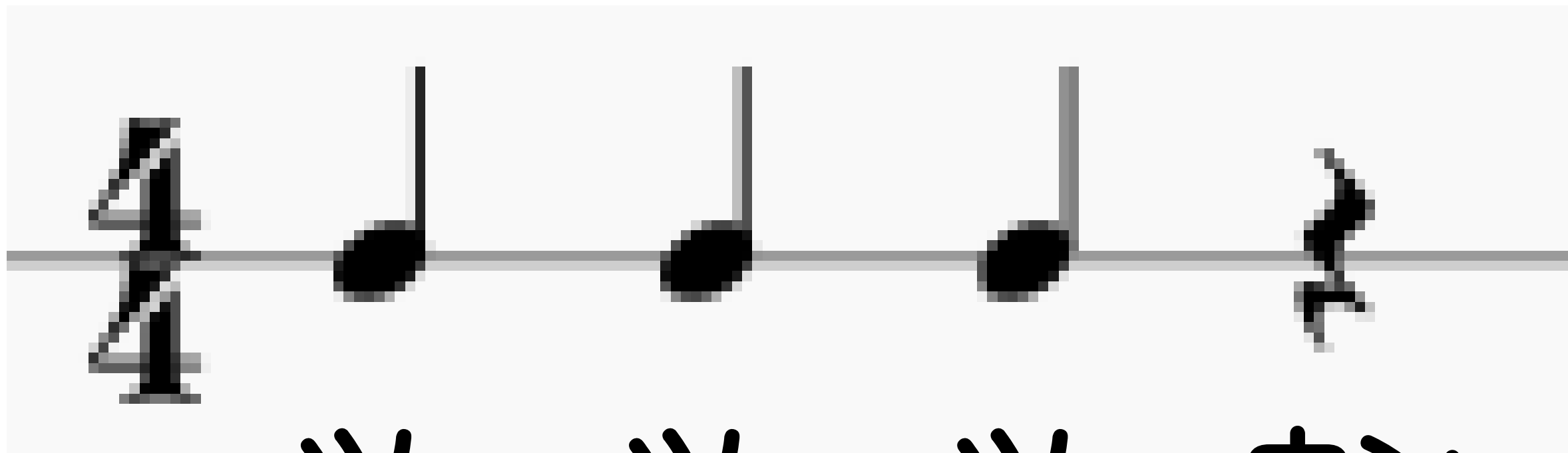


リズムカード





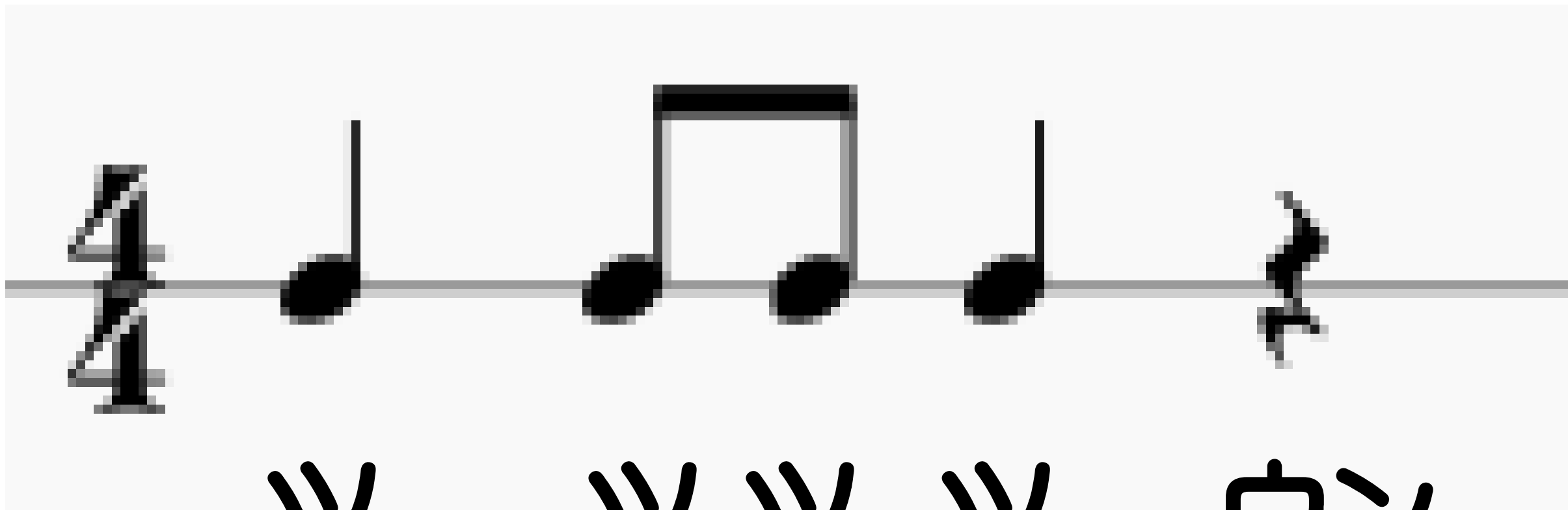
ツー ツー ツー ツー



ツー ツー ツー ウン



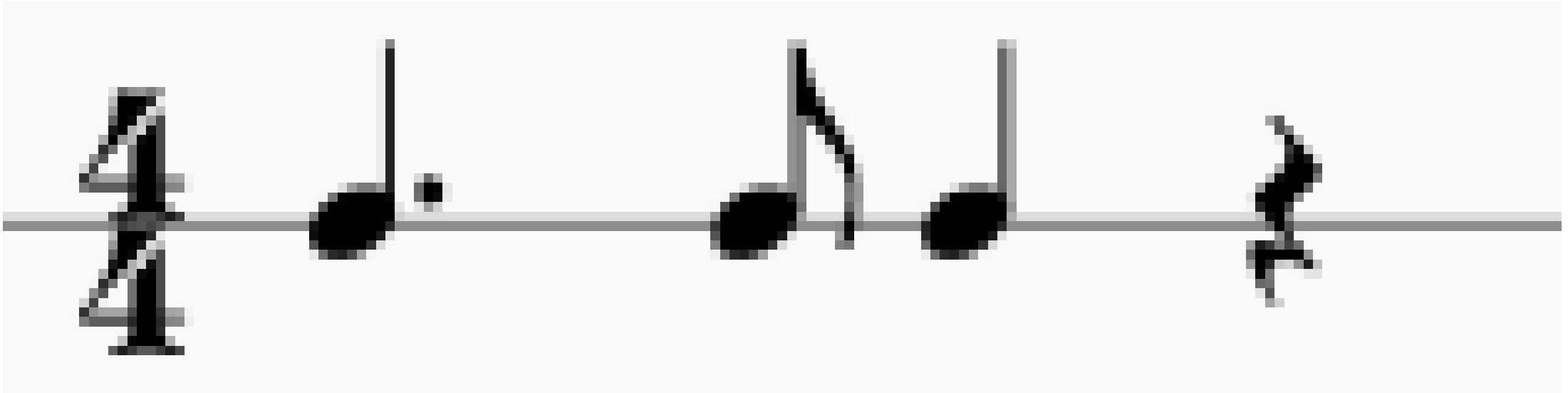
ツー ツ ツ ツー ツ ツ



ツー ツツ ツー ウン



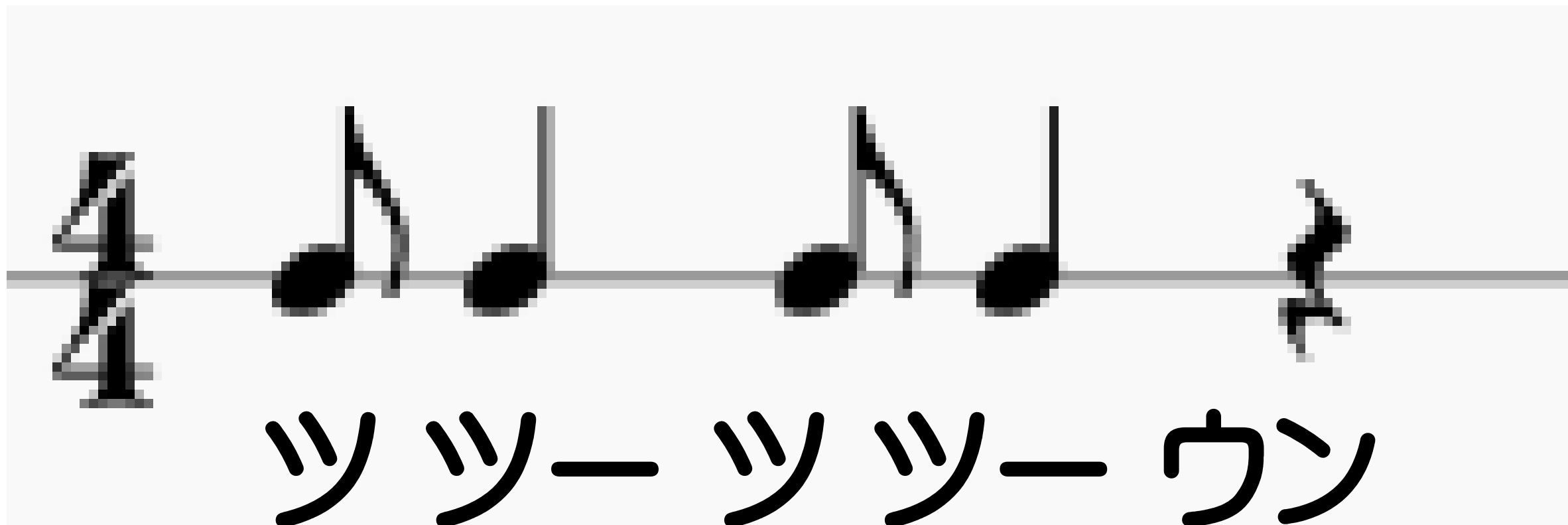
ツ — — ツ ツ — ツ —



ツーツ ツーツ ツーツ



ツ ツー ツ ツー ツー



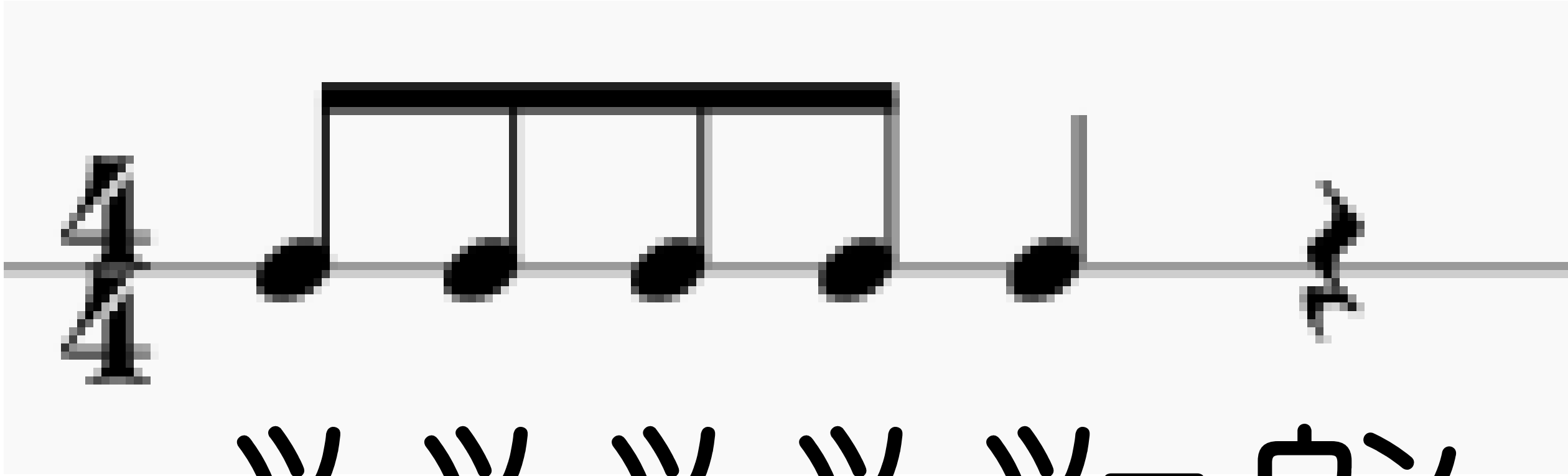
4

ツ ツー ツ ツー ウン

The image shows a musical staff with a 4/4 time signature. The melody consists of six notes: a quarter note (C4), a half note (D4), a quarter note (E4), a half note (F4), a quarter note (G4), and a half note (A4). Below the staff, the lyrics are written in Japanese: 'ツ ツー ツ ツー ウン'. The first two notes correspond to 'ツ' and 'ツー', the next two to 'ツ' and 'ツー', and the final note to 'ウン'.



ツ ツ ン ツ ツー ウン



ツ ツ ツ ツ ツー ウン



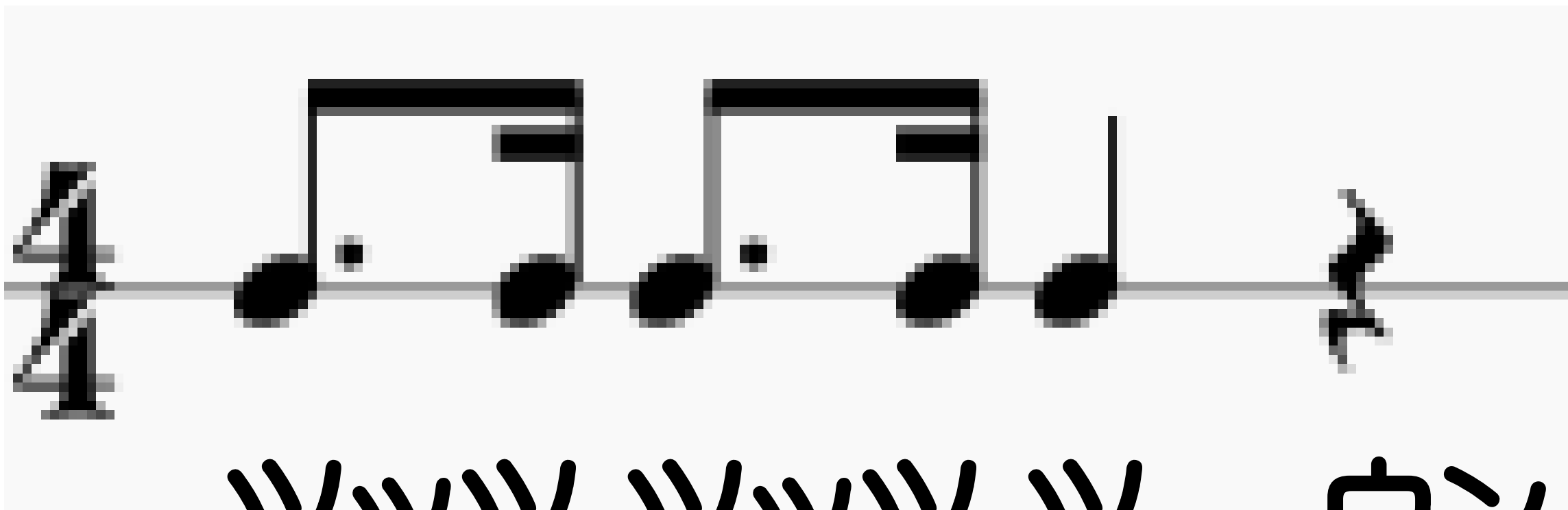
ツー ツ ツ ツ ツ ウン



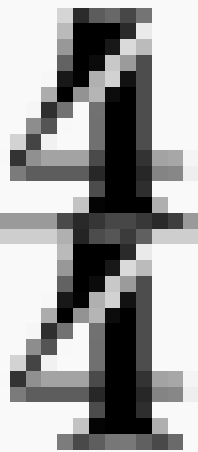
ン ツ ツ ツ ツー ウン

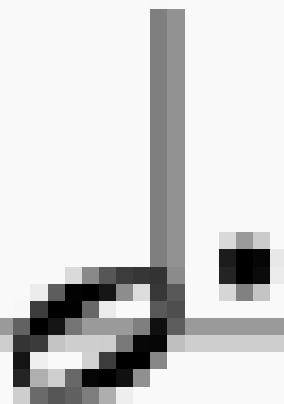
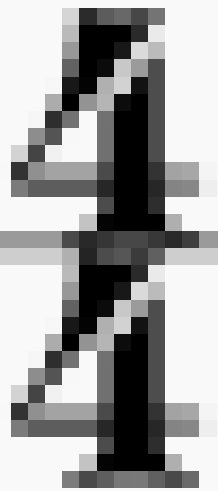


ツー ツツ ツ ツー ウン



ツツツ ツツツ ツーウン

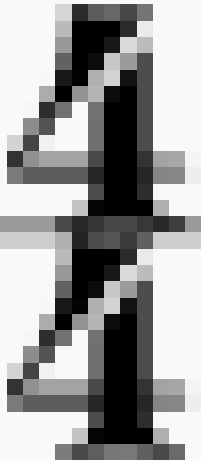


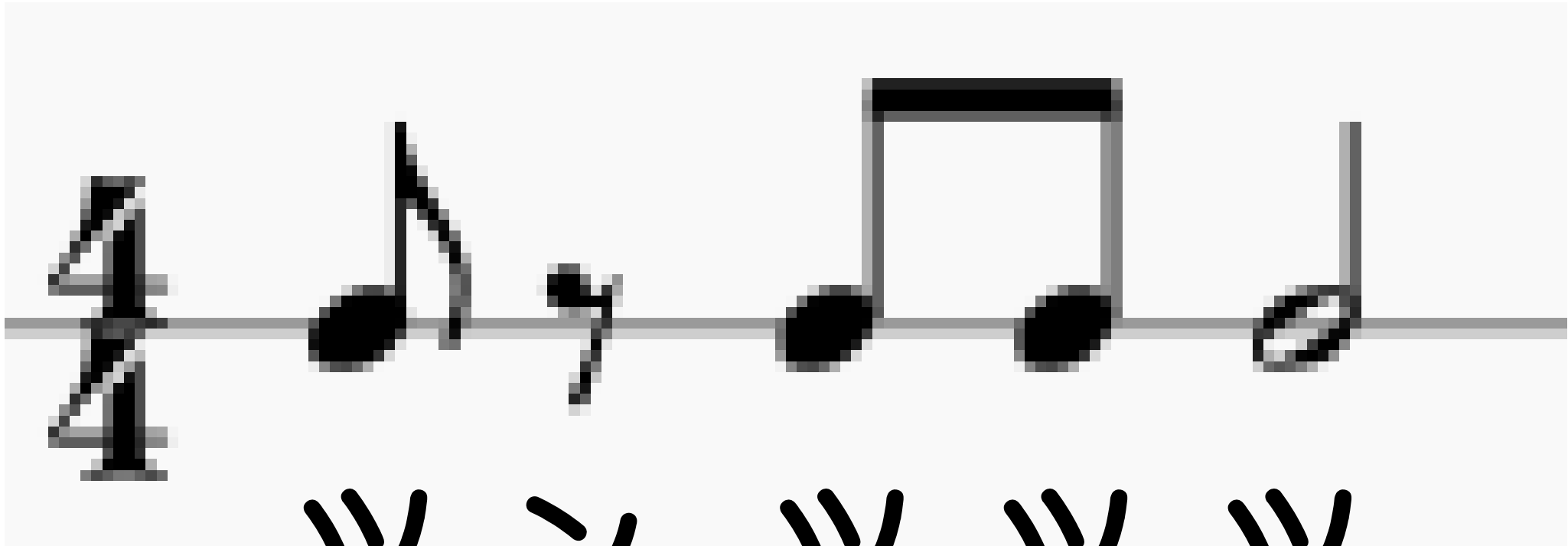


ツー———— ウン



ツ ツ ツ ツ ツ ツ ウン





ツ

ン

ツ

ツ

ツ

— — —



A musical staff with a 4/4 time signature. The notes are: a quarter note on the first line, a quarter note on the second line, a quarter note on the second space, a quarter note on the second space, a quarter note on the second space, a quarter note on the second space, a quarter note on the second space, and a quarter note on the second space.

ツ ツ ツ ツ ツ ツ ツー